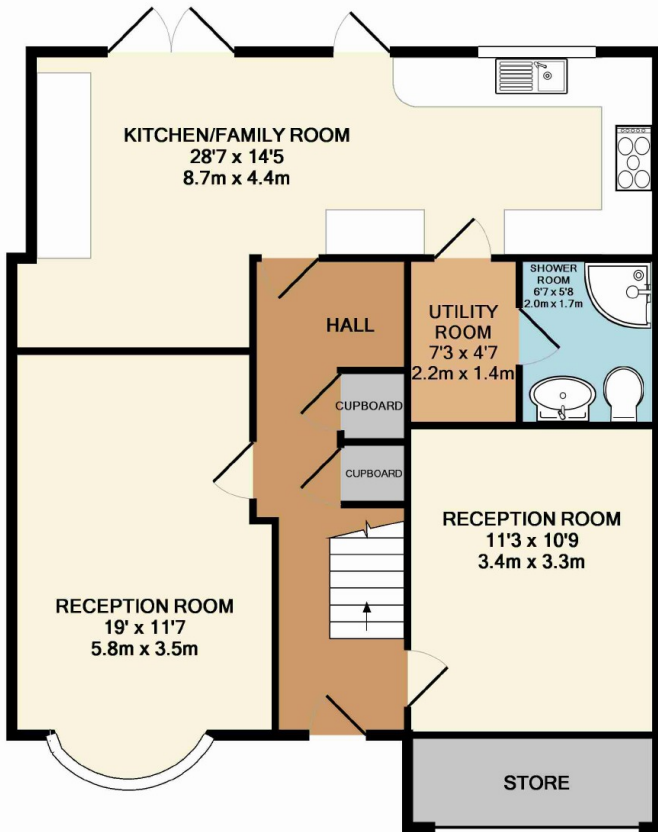
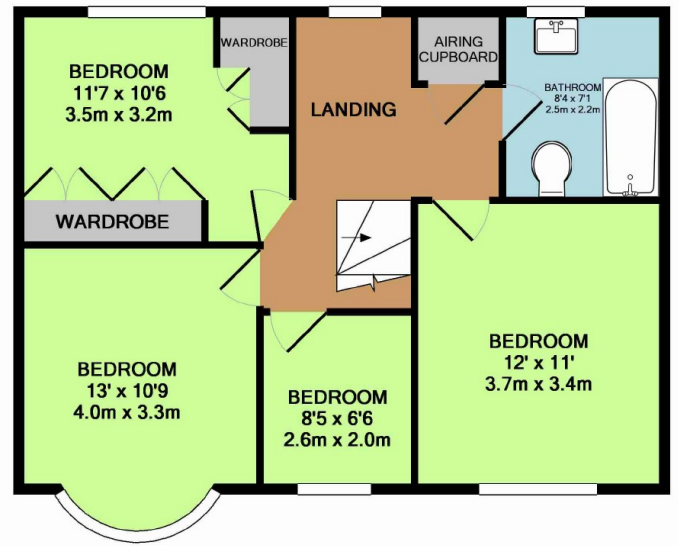


Rosslyn Avenue, North Chingford, London
OIEO £680,000



GROUND FLOOR
APPROX. FLOOR
AREA 906 SQ.FT.
(84.2 SQ.M.)



1ST FLOOR
APPROX. FLOOR
AREA 609 SQ.FT.
(56.6 SQ.M.)

TOTAL APPROX. FLOOR AREA 1515 SQ.FT. (140.8 SQ.M.)

Whilst every attempt has been made to ensure the accuracy of the floor plan contained here, measurements of doors, windows, rooms and any other items are approximate and no responsibility is taken for any error, omission, or mis-statement. This plan is for illustrative purposes only and should be used as such by any prospective purchaser. The services, systems and appliances shown have not been tested and no guarantee as to their operability or efficiency can be given
Made with Metropix ©2012